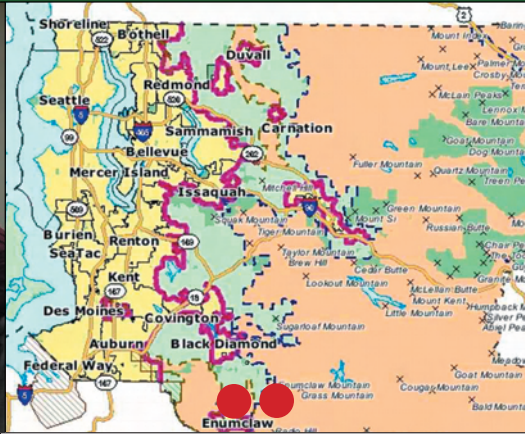


# URBAN RURAL CONNECTIONS – A WHOLE KING COUNTY



## Grassroots passion for Future Generations

### EFFRA, Enumclaw

The Enumclaw Forested Foothills Recreation Association (EFFRA) is a community group of residents who live in and around Enumclaw.

Formed two years ago, the association felt passionately that the forested foothills nearby should be preserved from development. To do so, they needed to work cooperatively with landowners to create win-win situations. They realized the importance of taking action now so that future generations could enjoy the abundant wildlife; beautiful trails; and fresh, clean water available because of the large expanse of forestland. They also realize the importance of keeping farming alive in the Enumclaw Plateau.

EFFRA has partnered with many different groups to move their goal forward, from trail users (horse back riders, mountain bikers, and hikers), conservation groups, hunting organizations, and many other organizations.

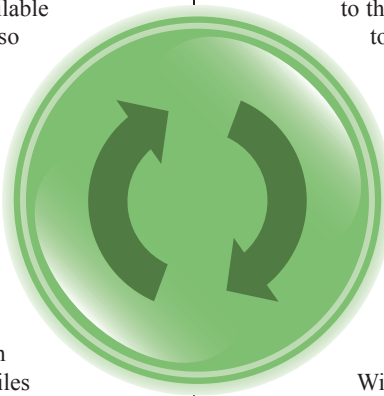
In just two short years they have helped bring over a million dollars to add many acres of the southern exposure to Mt. Peak Park. They mapped over 100 miles of existing, maintained trails and received a prestigious planning grant from the National Park Service. They've also taken over twenty elected officials and key decision makers out on trail rides. Their goal is to conserve 10,000 acres in the Enumclaw area for future generations to enjoy! You can learn more about EFFRA by visiting <http://www.effra.org>.

### Mt. Peak, Outside Enumclaw

Pinnacle Peak Park is a 256-acre volcanic cone that rises straight out of the Enumclaw farmlands and straight down to the White River. A one-mile long forested trail climbs 1000-vertical feet to the top of the 1800-foot geological knob. Known locally as Mt. Peak, and even Mt. Pete, Pinnacle Peak is one of the most popular hikes among Enumclaw and South county families.

It is not uncommon to meet 20 or more hikers of all ages along the way. The 30- to 40-minute hike with multiple switchbacks to the top is a real aerobic workout. Once you get to the top, you will see extruded outcroppings of columnar basalt, concrete footings of an old fire lookout, and best of all, spectacular views of Mt Rainier and the White River valley. The website Trails.com says "its visibility and prominence in the Enumclaw region gives Pinnacle Peak a certain 'because it's there' satisfaction to all who have reached the top." The trail is named for Cal Magnusson, a long time Cascade mountaineer who worked at REI for 25 years with famed mountain climber Jim Whittaker.

With help and support from the Enumclaw Forested Foothills Recreation Association (EFFRA), a recent acquisition of 83 acres on the south side of the park provides another access to the peak along gravel roads and even more spectacular views along the way. The new acquisitions also present an opportunity to develop an equestrian trail and other recreation amenities.



**EFFRA**  
Enumclaw Forested Foothills  
Recreation Association

 **PRKC**  
Partnership for Rural King County

King County Parks **Your**  **Big Backyard**