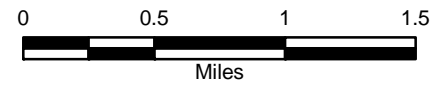


Raging River Basin Stewardship on the Landscape



King County
Department of
Natural Resources and Parks
**Water and Land Resources
Division**

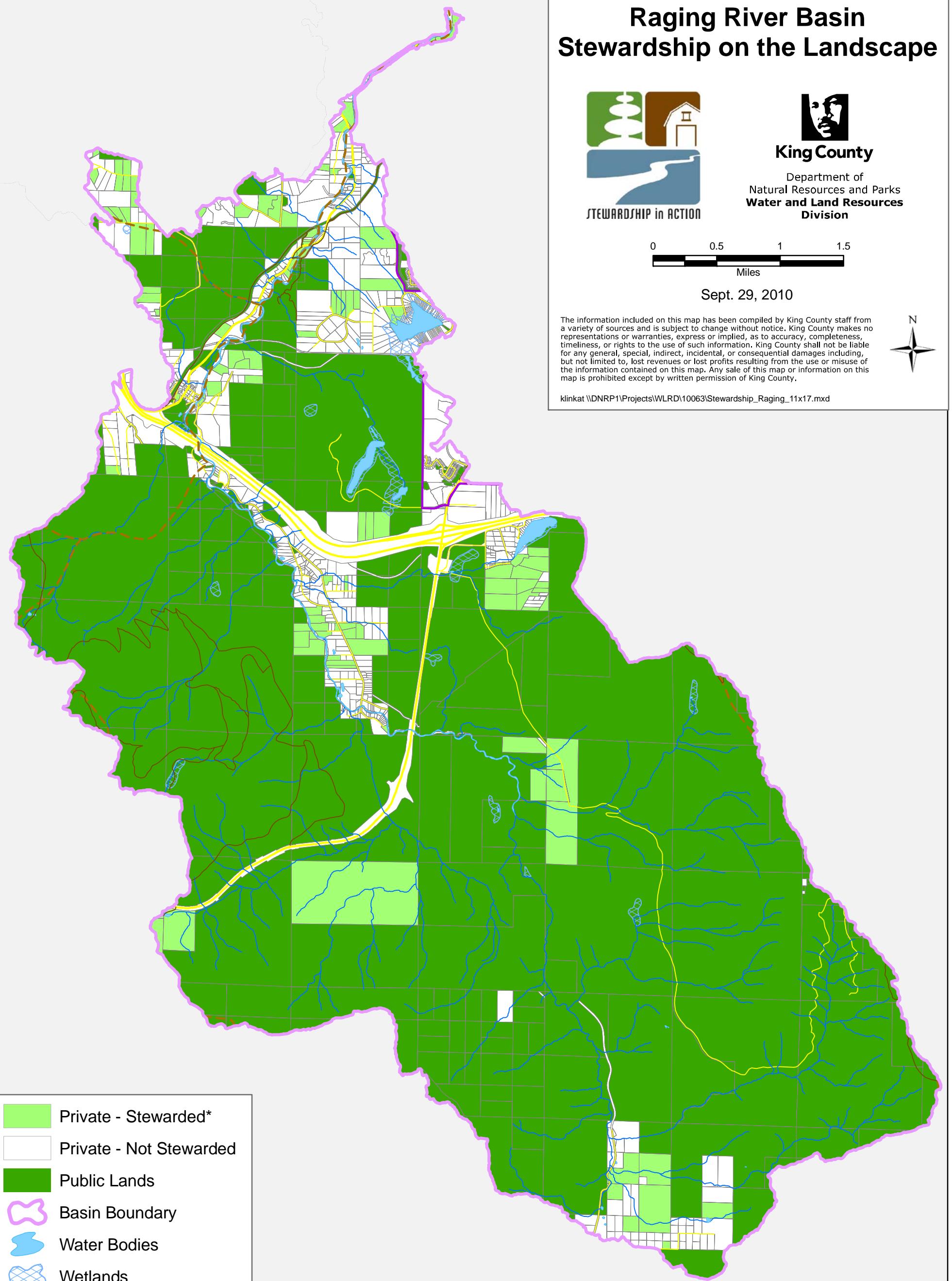


Sept. 29, 2010

The information included on this map has been compiled by King County staff from a variety of sources and is subject to change without notice. King County makes no representations or warranties, express or implied, as to accuracy, completeness, timeliness, or rights to the use of such information. King County shall not be liable for any general, special, indirect, incidental, or consequential damages including, but not limited to, lost revenues or lost profits resulting from the use or misuse of the information contained on this map. Any sale of this map or information on this map is prohibited except by written permission of King County.



klinkat \DNRP1\Projects\WLRD\10063\Stewardship_Raging_11x17.mxd



-  Private - Stewarded*
-  Private - Not Stewarded
-  Public Lands
-  Basin Boundary
-  Water Bodies
-  Wetlands
-  Streams
-  Urban Growth Boundary
-  Trails
-  Wildlife Network
-  Major Roads
-  Local Roads

* Stewardship includes properties that are enrolled in current use, have attended stewardship classes, or have a forest stewardship plan, farm plan, stewardship in action plan, or a native growth protection encumbrance.